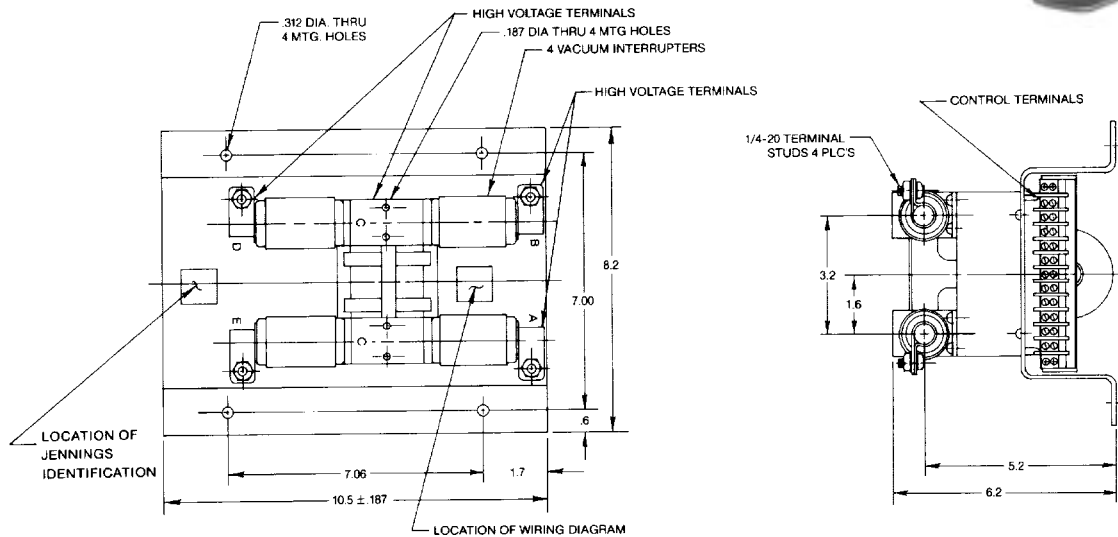


RT22-4070-A31NB, RT22-4070-A317B

RT22-4070-A31NB and RT22-4070-A317B are vacuum contactors with DPDT contact arrangements. These units can also be used as SPDT contactors by wiring the contacts in parallel. These contactors are more commonly used in antenna switching for high power RIF circuits such as those encountered in transmitters.



GENERAL SPECIFICATIONS

MODEL NO.	RT22-4070-A317B	RT22-4070-A31NB
Rated Voltage (kV Peak) @ 2 MHz	22	22
Operate Voltage VACR (RMS) @ 50/60 Hz	230	230
Continuous Current Amps (RMS) @ 2 MHz	40	40
Contact Resistance Max (Micro Ohms) (@ rated continuous current)	500	500
Capacitance Across Open Contacts (pF Max)	2.5	2.5
Capacitance Contacts to Frame (pF Max)	1.0	1.0
Opening Time, Milliseconds (Max)	300	300
Closing Time, Milliseconds (Max)	300	300
Actuator Type	Latching	Latching
Actuator Voltage (VACR)	115	230
Pull-in Current (Amps Max)	0.4	0.3
Dielectric Withstand to Frame, Volts (60 Hz RMS for 1.0 min.)	1250	1250
Weight (Max)	12 lbs	12 lbs
Mechanical Life	250,000	250,000
Auxiliary Contact Ratings 115/230 VAC RMS	15	15