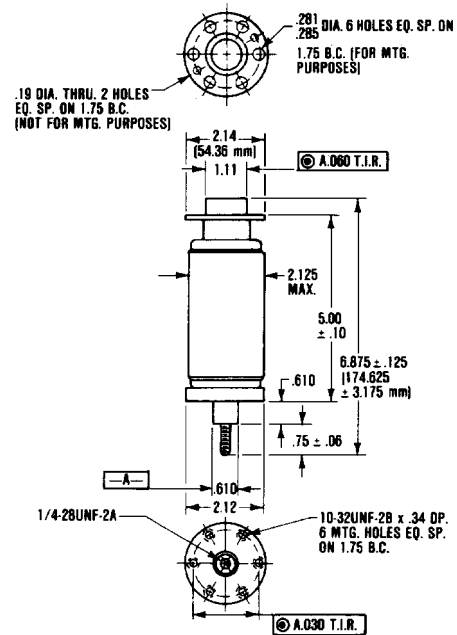


## RT1 SPECIFICATIONS

ELECTRICAL RATINGS	
Dielectric Withstand Voltage (50/60 Hz)	50 kV pk
Voltage Rating	
at 300 KHz	30 kV pk
at 10 MHz	25 kV pk
at 30 MHz	18 kV pk
Current Rating	
at 300 KHz	90 amps rms
at 10 MHz	25 amps rms
at 30 MHz	15 amps rms
Contact Resistance max.	300 $\mu\Omega$
Contact Capacitance @ Full Gap max.	2.0 pF
Terminal to Terminal Inductance max.	50 nH
MECHANICAL DATA	
Switch Weight max.	25 oz.
Contact Stroke	0.09 in.
Force Required for Specified Contact Gap	10 lbs.
Added Contact Force	30 lbs.
Opening Speed nom.	1 ft./sec.
Closing Speed nom.	1 ft./sec.



## RT1G SPECIFICATIONS

ELECTRICAL RATINGS	
Dielectric Withstand Voltage (50/60 Hz)	50 kV pk
Voltage Rating (dc)	30 kV pk
Current Rating (dc)	200 amps rms
Contact Resistance max.	300 $\mu\Omega$
Contact Capacitance @ Full Gap max.	5.0 pF
Terminal to Terminal Inductance max.	50 nH
MECHANICAL DATA	
Switch Weight max.	30 oz.
Contact Stroke	0.09 in.
Force Required for Specified Contact Gap	10 lbs.
Added Contact Force	30 lbs.
Opening Speed nom.	1 ft./sec.
Closing Speed nom.	1 ft./sec.

**NOTES:**

1. Avoid twisting movable terminal and excessive opening of contacts to prevent damage to bellows and reduced life.
2. Electrical connections should be made at copper terminals. Compression type fittings are recommended.
3. Interrupter should be mounted at fixed end of stainless steel plate.
4. ALL DIMENSIONS ARE IN INCHES WITH OUTSIDE DIMENSIONS ALSO IN METRIC.